



## Functions

### Copy

- Standard B&W copier in 2,400 x 600 dpi (with smoothing)
- 16/20 cpm
- 7.6 seconds First Copy Out Time
- B5-A3 paper size (A5R-A3 from 100-sheet bypass)
- 1-999 multiple copies
- 25-200% Zoom (1% increments), various pre-set ratios
- Optional: Automatic cassette change, electronic sort

### Print

- Standard local GDI print
- 16/20 ppm in up to 600 x 600 dpi output quality
- USB 2.0 high speed interface

### Scan

- Standard local B&W TWAIN scan
- USB 2.0 high speed interface
- Up to 600 x 600 dpi scan
- Multi/single page TIFF, BMP formats
- Scan to e-mail with TOSHIBA Viewer into any MAPI\* compatible e-mail application

### Paper handling

- Standard 250-sheet paper cassette + 100-sheet bypass
- Optional up to 600-sheet paper supply
- Standard platen cover/optional 100-sheet ADF
- Paper weight: 64-80 g/m<sup>2</sup> (cassette, multi-feed bypass) 50-163 g/m<sup>2</sup> (single-feed bypass)

### General

- Laser B&W copier/printer/scanner
- Stylish and compact design
- 25 second warm-up time
- 16 MB standard memory / max. 80 MB
- Supplies Starter Kit in the box (toner for 5,900 pages\*\*/ developer and drum for 72,000 pages (e-STUDIO166), for 90,000 pages (e-STUDIO206))
- Low toner detection (warning LED)\*\*
- Highly environmentally friendly models with intelligent toner recycling system

\* Messaging Application Programming Interface

\*\* At 6% toner coverage

\*\*\* Full functionality of the system guaranteed in connection with TOSHIBA original supplies only

## Configuration



Technical data is subject to change without prior notice. All company and/or product names are trademarks and/or registered trademarks of their respective manufacturers in their markets and/or countries. All rights reserved. TGS is constantly making efforts to deliver the latest status of data to its partners. Specifications for some models may change in the time between the production and the release of this documentation. Copyright © 2007 TOSHIBA TEC. ENTCT



e-STUDIO166  
e-STUDIO206

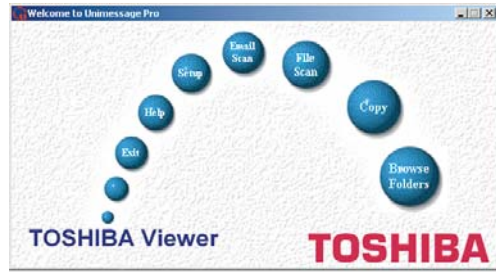
# Document Manager

- Out of the box multi-functionality: Print, Copy and Scan - all in one
- Highly attractive and representative design - fits into all modern office spaces
- Innovative digital technology for topmost reliability and excellent image quality
- Wide and clearly layed-out operator panel for excellent user-friendliness



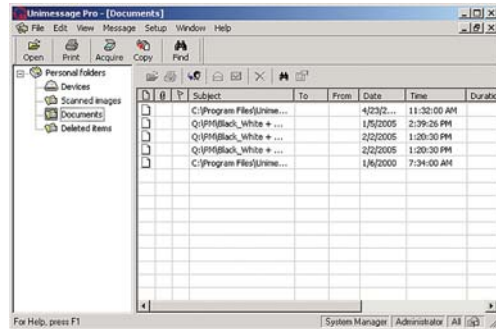


## Manage all your scan documents from a single platform!



Delivered in the box with the e-STUDIO166/206, the intuitive and self-explanatory **TOSHIBA Viewer** software is the perfect enhancement for your MFP. Thanks to **TOSHIBA Viewer** software, your customer will be able to:

- Scan documents from within a TWAIN compatible application, edit and save them as multiple page documents
- Perform the Scan to E-mail function (the scanned document will be automatically converted into a TIFF attachment)



- Configure the e-STUDIO printer settings from your PC
- Have a clear and organised overview of all data in a convenient structure

Your customer will be familiar with the comfortable use of the **TOSHIBA Viewer** software as it is already available for other systems in the range, such as the e-STUDIO170F.

## When Design stands for functionality

### Everyday statements from office life:

“My analogue copier has an impractical sorter with many bins. It's bulky and inconvenient. The sorter has a limited number of bins and I cannot make more copy sets in one go than the sorter allows me to. This is time and space consuming”

- The Electronic Sort function\* of the e-STUDIO166/206 helps you to retrieve all copied sets without needing to sort all pages manually after copying. You can quickly and conveniently produce up to 999 sets, automatically stacked into the practical central output tray.

“Copying all pages from the platen glass is time consuming and inefficient.”

- Thanks to the 100-sheet Automatic Document Feeder\* (ADF), the user is able to scan all originals in the order they are laid down in a minimum time for both copy and scan jobs.

“Sometimes users overlook their print output and tend to forget it at the device, which can be a problem in case of confidential information.”

- With contrasting colours, the distinct, stylish design of the e-STUDIO166/206 affords extra visibility in the inner output tray, allowing users to easily see and remove outputs.

“My assistant always removes the white plain paper from the cassette to print or copy on letterhead paper. Sometimes, by inadvertence, normal print jobs might be produced on this special paper, which is not needed, and means expense and wasted resources.”

- The e-STUDIO166/206 series offers up to 3\* paper sources enabling usage of different paper types or media. The user can also set which default paper source to use for printing – using paper from the cassettes or the bypass. With a total paper capacity of up to 600\* sheets, the e-STUDIO166/206 series easily answers all document management demands in the workplace.



\* optional

### Digital quality and performance

Accurate reproduction of text is one of the main achievements of digital technology. The e-STUDIO166/206 series is not only able to preserve the quality of graphic elements, it also increases user-efficiency with its additional electronic sort function (requires memory upgrade and 100-sheet Automatic Document Feeder)\*.

### GDI printing and TWAIN scan standard

The end-user has the possibility to use the MFP in various ways; converting paper documents into digital files (scan) as well as printing documents from the PC. Both functions are delivered in the box, together with the useful TOSHIBA Viewer software.

### Versatile paper handling

The e-STUDIO166/206 series offers more flexibility thanks to a maximum of 3\* different paper sources and various paper formats. The series maintains a high level of productivity as the models come with automatic cassette change\* for continuous paper supply.

### Compact and space saving design

Thanks to its compact and space-saving design, the e-STUDIO166/206 is ideal for use in the workplace. Copier, printer and scanner are combined in one single A3 size device. The central output tray is within the body of the device and it has been specially equipped with a shaded output area for enhanced output visibility.

### User friendly control panel for easier operation

Particular care has been taken to create an easy to operate panel. Colourful, large buttons help the user to quickly recognise the different features and allow a convenient operation. Intuitive icons also enhance simple usage and universal understanding.

### Extended Durability

Delivering ample 16/20 ppm performance, e-STUDIO166/206 play an important part in accelerating office productivity. Both machines have been designed for exceptional durability and require noticeably less changing toner cartridge and less maintenance, allowing users to work with the confidence that comes of using reliable technology.

### Environmental friendly and economical

Thanks to an improved engine design, as well as a larger toner cartridge with a smart toner recycling system (no-waste toner bottle), the e-STUDIO166/206 series is highly environmentally friendly; the economical choice for your office environment.

\* optional

